



- » Adidas Employee Store
- » Starbucks
- » Sub King
- » Subway
- » New Seasons
- » Breakaway Brewery
- » LaQuinta
- » Silver Cloud Hotel
- » Besaws
- » XLB
- » Grassa
- » St. Honore Boulagerie
- » Olympia Provisions
- » Dockside
- » Fuego
- » Impala Bar & Grill
- » Cha Cha Cha
- » Industrial Strength Gym

CAPACITY COMMERCIAL GROUP 805 SW Broadway, Suite 700 Portland, OR 97205

PHONE. 503.326.9000 | WEB. www.capacitycommercial.com

E. mccoym@capacitycommercial.com

E. jeffvaldes@capacitycommercial.com

— Proud member of:



FOR LEASE

NORTHWEST PORTLAND OFFICE SPACE



3077 NW ST HELENS ROAD | PORTLAND, OR

Unique opportunity to lease for the first time these NW Portland office spaces with signage potential as well as mountain, city scape and river views. The first and second floor available vacancies can be leased together for 6,531 rsf or leased separately. Each suite has a blend of open space and private offices. Plenty of parking, minutes to downtown, lots of natural light in each suite and all of it backing up to Forest Park!

- » Located in the Guild Lake submarket
- » Excellent River and Mt. Hood Views
- » Proximity to Portland CBD and Hwy 30/I-405
- » Price: \$24.00/sf MG

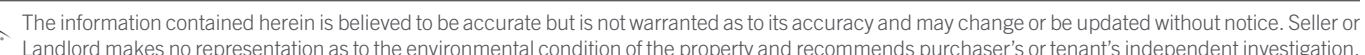
CAPACITY COMMERCIAL GROUP 805 SW Broadway, Suite 700 Portland, OR 97205

PHONE. 503.326.9000 | WEB. www.capacitycommercial.com

E. mccoym@capacitycommercial.com

E. jeffvaldes@capacitycommercial.com

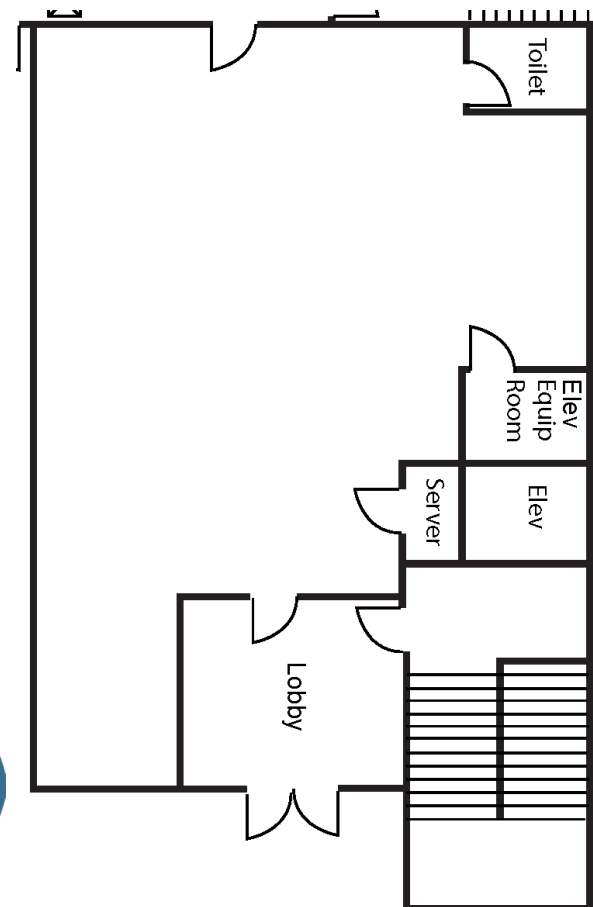
— Proud member of:



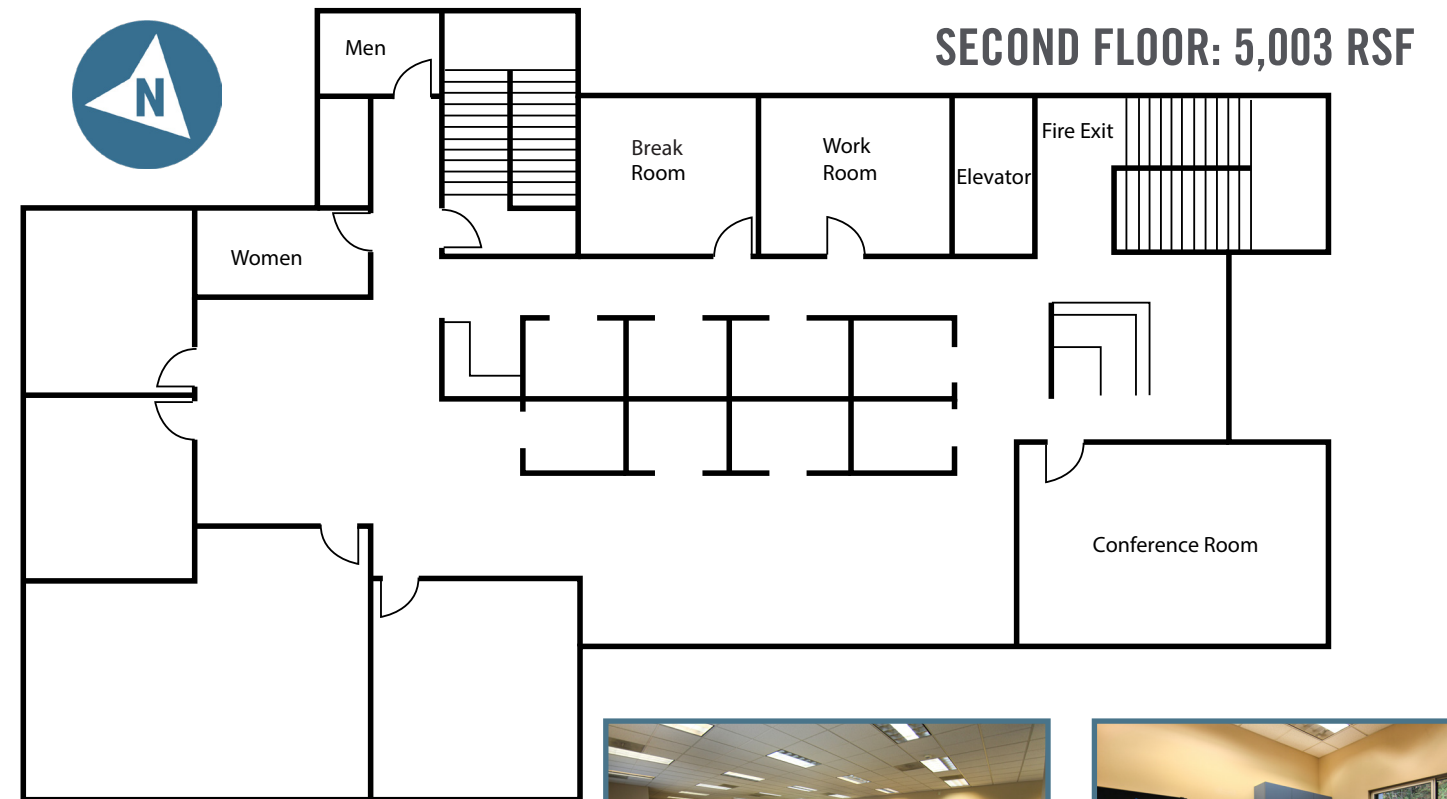
3077 NW ST HELENS ROAD | Portland, OR



FIRST FLOOR: 1,528 RSF



- » Lobby Exposure
- » In Suite Restroom
- » Private Offices
- » Flexible Open Workspace
- » 270 Degrees of Natural Light Penetration



SECOND FLOOR: 5,003 RSF



- » Comprised of Entire 2nd Floor
- » Plug-n-Play Opportunity w/Furniture Included
- » Large Conference Room
- » Private Offices with Excellent Views
- » Dedicated Private Restrooms
- » Elevator Served
- » Deck Off Kitchen Facing Forest Park
- » Exterior Signage for 2nd Floor Tenant

FIRST FLOOR, SUITE 100 | SECOND FLOOR, SUITE 200

CONTACT

McCOY DOERRIE *Vice President* 503.517.7120

JEFF VALDES *Senior Vice President* 503.542.2898