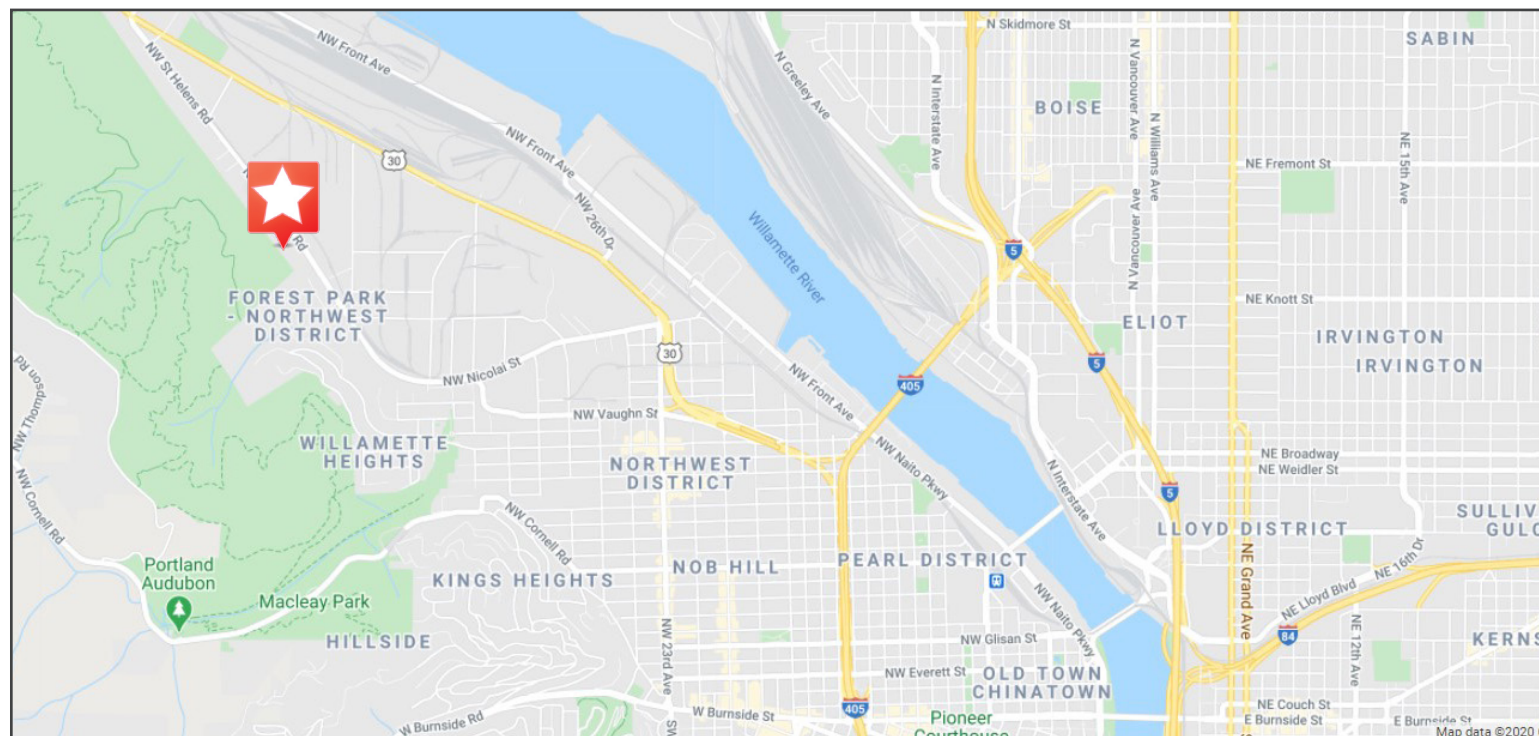




FOR LEASE

NORTHWEST PORTLAND OFFICE SPACE



NEARBY AMENITIES & RESTAURANTS

- » Adidas Employee Store
- » Starbucks
- » Sub King
- » Subway
- » New Seasons
- » Breakaway Brewery
- » LaQuinta
- » Silver Cloud Hotel
- » Besaws
- » XLB
- » Grassa
- » St. Honore Boulangerie
- » Olympia Provisions
- » Dockside
- » Fuego
- » Impala Bar & Grill
- » Cha Cha Cha
- » Industrial Strength Gym

CONTACT US

CAPACITY COMMERCIAL GROUP 805 SW Broadway, Suite 700 Portland, OR | 97205

PHONE. 503.326.9000 | WEB. www.capacitycommercial.com

McCOY DOERRIE

Vice President

P. 503.517.7120

E. mccoym@capacitycommercial.com

JEFF VALDES

Senior Vice President

P. 503.542.2898

E. jeffvaldes@capacitycommercial.com

Proud member of:



The information contained herein is believed to be accurate but is not warranted as to its accuracy and may change or be updated without notice. Seller or Landlord makes no representation as to the environmental condition of the property and recommends purchaser's or tenant's independent investigation.

FOR LEASE

NORTHWEST PORTLAND OFFICE SPACE



3077 NW ST HELENS ROAD

3077 NW ST HELENS ROAD | PORTLAND, OR

Unique opportunity to lease for the first time this NW Portland office space with mountain, city scape and river views. This suite is wide open! Plenty of parking, minutes to downtown, lots of natural light and all of it backing up to Forest Park!

- » Located in the Guild Lake Submarket
- » Excellent River and Mt. Hood Views
- » Proximity to Portland CBD and Hwy 30/I-405
- » Price: \$24.00/sf MG

CONTACT US

CAPACITY COMMERCIAL GROUP 805 SW Broadway, Suite 700 Portland, OR | 97205

PHONE. 503.326.9000 | WEB. www.capacitycommercial.com

McCOY DOERRIE

Vice President

P. 503.517.7120

E. mccoym@capacitycommercial.com

JEFF VALDES

Senior Vice President

P. 503.542.2898

E. jeffvaldes@capacitycommercial.com

Proud member of:



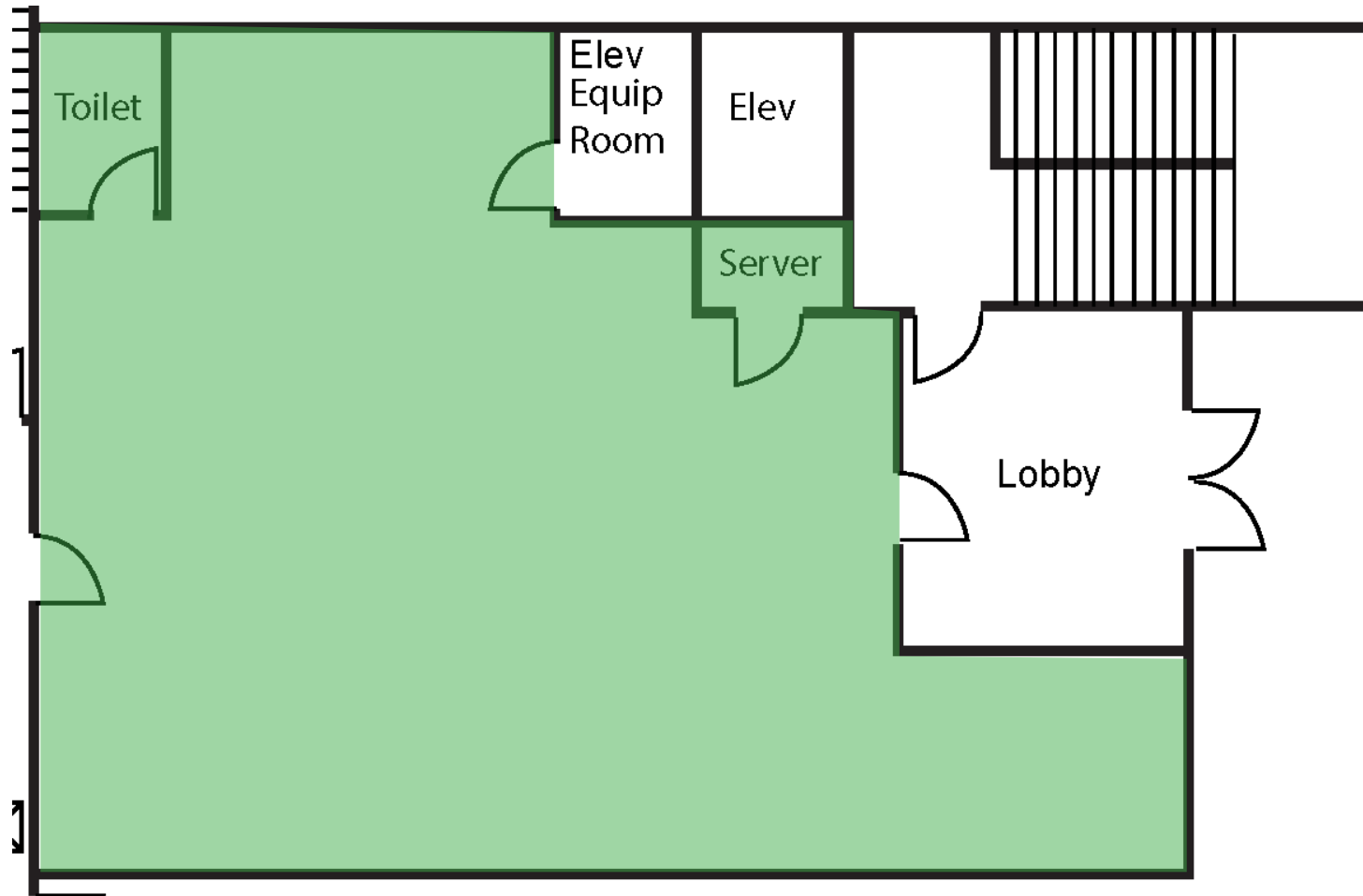
The information contained herein is believed to be accurate but is not warranted as to its accuracy and may change or be updated without notice. Seller or Landlord makes no representation as to the environmental condition of the property and recommends purchaser's or tenant's independent investigation.

3077 NW ST HELENS ROAD

Portland, OR



FIRST FLOOR: 1,528 RSF



- >> Lobby Exposure
- >> In Suite Restroom

- >> Flexible Open Workspace
- >> 270 Degrees of Natural Light Penetration

FIRST FLOOR, SUITE 100 | FIRST FLOOR: 1,528 RSF

CONTACT

McCOY DOERRIE *Vice President* 503.517.7120

JEFF VALDES *Senior Vice President* 503.542.2898