

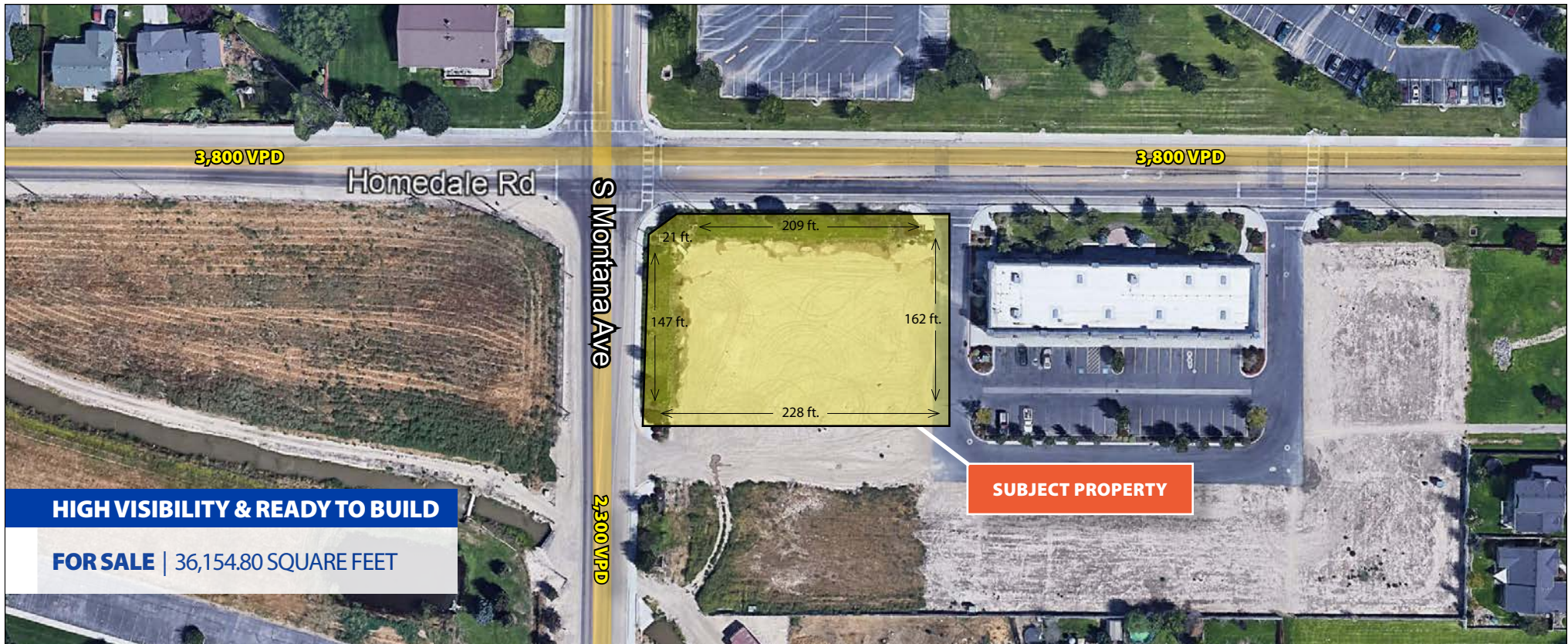


PRIME RETAIL CORNER FOR SALE

HOMEDALE & MONTANA ROADS

Caldwell, Idaho 83607

COMMERCIAL



CONTACT

Michael Ballantyne, SIOR, CCIM

208.947.0831
mjb@tokcommercial.com

Sam McCaskill

208.947.0804
sam@tokcommercial.com

PROPERTY INFORMATION

Size:	+/- 0.83 Acres 36,154.80 sf
Sale Price:	\$200,000.00 \$5.53 psf
Submarket:	Caldwell
Zoning:	C-1 Neighborhood Commercial
County:	Canyon County

LISTING COMMENTS

High visibility corner lot at the intersection of Homedale and Montana Roads.
 Across from Vallivue High School, with 1,055 students.
 Contact agent for use restrictions.

Updated March 9, 2020

This information was obtained from sources believed reliable but cannot be guaranteed. Any opinions or estimates are used for example only.

tokcommercial.com



PRIME RETAIL CORNER FOR SALE

HOMEDALE & MONTANA ROADS

Caldwell, Idaho 83607

COMMERCIAL



Updated March 9, 2020

This information was obtained from sources believed reliable but cannot be guaranteed. Any opinions or estimates are used for example only.



PRIME RETAIL CORNER FOR SALE

HOMEDALE & MONTANA ROADS

Caldwell, Idaho 83607

COMMERCIAL

ZONING OPPORTUNITIES



INTENDED USES

- Bank
- Office
- Dry cleaning
- Retail Stores
- Daycare
- Restaurant

C-1 NEIGHBORHOOD COMMERCIAL

The purpose of the neighborhood commercial zone is to provide areas by zoning procedures in accordance with the comprehensive plan that provide local commercial service needs located at select places at the perimeter of low density residential neighborhoods and in conjunction with the policies of the comprehensive plan.