

PHASE II COMMERCIAL DEVELOPMENT FOR SALE - 1 TO 15 ACRES

HWY 95 & S 3RD STREET E, HOMEDALE, ID



CONTACT

ANDREA NILSON

Executive Director
+1 208 890 4028
andrea@summitcreg.com

LEANN HUME, CCIM, CLS, CRRP

Executive Director
+1 208 890 1089
leann@summitcreg.com

JULIE KISSLER

Associate Director
+1 208 794 2746
julie@summitcreg.com



SUMMIT
COMMERCIAL
REAL ESTATE GROUP

**SALE LISTING DETAILS &
PROPERTY HIGHLIGHTS**

AVAILABLE:	1 to 15 Acres
SALE PRICE:	Negotiable
ALLOWED USES:	Retail, Restaurant, Office, & More
PARCEL #:	RPA00000103762
TOTAL LOT SIZE:	±15 Acres
ZONING:	CI - Click Here for Uses
FRONTAGE:	Over 1,000 Feet on Hwy 95
UTILITIES:	Available to Site
ACCESS POINTS:	S 3rd St E & E Utah Ave
AMENITIES:	On-Site Irrigation, Mature Trees
CITY GROWTH:	2.73% Year-Over-Year Average
10 MILE POP:	22,251 People
AVAILABILITY:	Immediate

- Phase II commercial development land on Highway 95 at South 3rd Street East
- Flexible purchase options available, potential buyer may purchase 1 acre up to approximately 15 acres - the total development
- Negotiable sale pricing and terms, contact agents for details and potential lot splits
- Site amenities include Highway 95 frontage, direct access to the property, on-site irrigation canal, old growth trees, and utilities at or near site - [Google Map View](#)
- Located adjacent to another new retail development, occupiers include D & B Supply, Jacksons Food Stores, a pending quick serve restaurant, and an auto parts store
- Traffic generators include Badiola Rodo Arena, Homedale Municipal Airport, Moxie Java, Les Schwab Tire Center, Albertsons, Homedale City Parks, Homedale Garden Apartments, Homedale Junior - Senior High School & football field, Idaho Pizza, and other local retailers, restaurants, & services
- Homedale, like other bedroom communities in Idaho, is experiencing a surge of growth with a 10 mile population of 22,251 & an average HH income of \$91,620
- Contact agents for additional property information and development details

**NEW TENANTS IN THE NORTHERN
ADJOINING DEVELOPMENT - PHASE I**



**PHASE II COMMERCIAL DEVELOPMENT
HWY 95 & S 3RD STREET E, HOMEDALE, ID**



**PHASE I CONSTRUCTION UNDERWAY
D&B, JACKSONS, QSR, & AUTO PARTS**



**AMENITIES INCLUDE HWY 95
FRONTAGE & ACCESS**



PHASE II COMMERCIAL DEVELOPMENT
HWY 95 & S 3RD STREET E, HOMEDALE, ID



**5, 10 & 15 MILE DEMOGRAPHICS
& RETAIL DEMAND OUTLOOK**

10 MILE SNAPSHOT

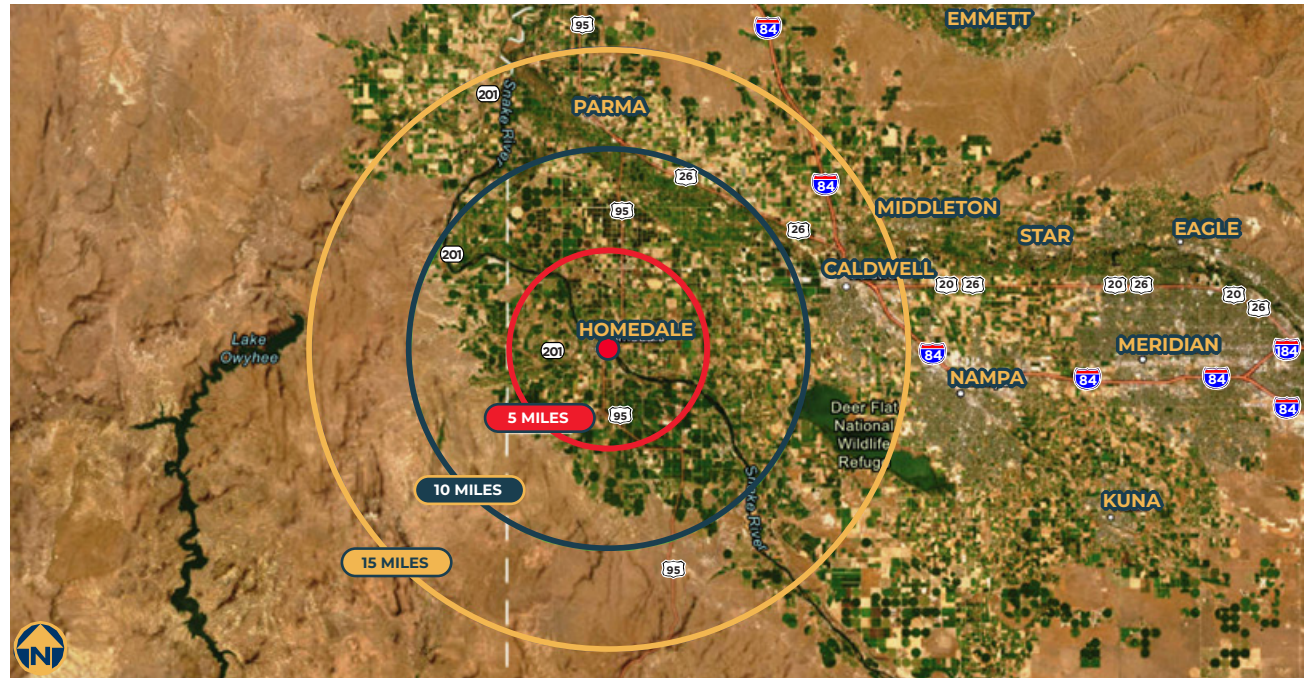
20,841
POPULATION

7,283
HOUSEHOLDS

\$72,561
MEDIAN HH INCOME

\$91,620
AVERAGE HH INCOME

40
MEDIAN AGE



5, 10 & 15 MILE DEMOGRAPHICS
CLICK BELOW TO VIEW

RETAIL DEMAND OUTLOOK
CLICK BELOW TO VIEW



Source: U.S. Census Bureau. Esri forecasts for 2025 and 2030. Esri converted Census 2010 into 2020 geography and Census 2020 data.

**5, 10 & 15 MINUTE DRIVE-TIME
DEMOGRAPHICS**

15 MINUTE SNAPSHOT

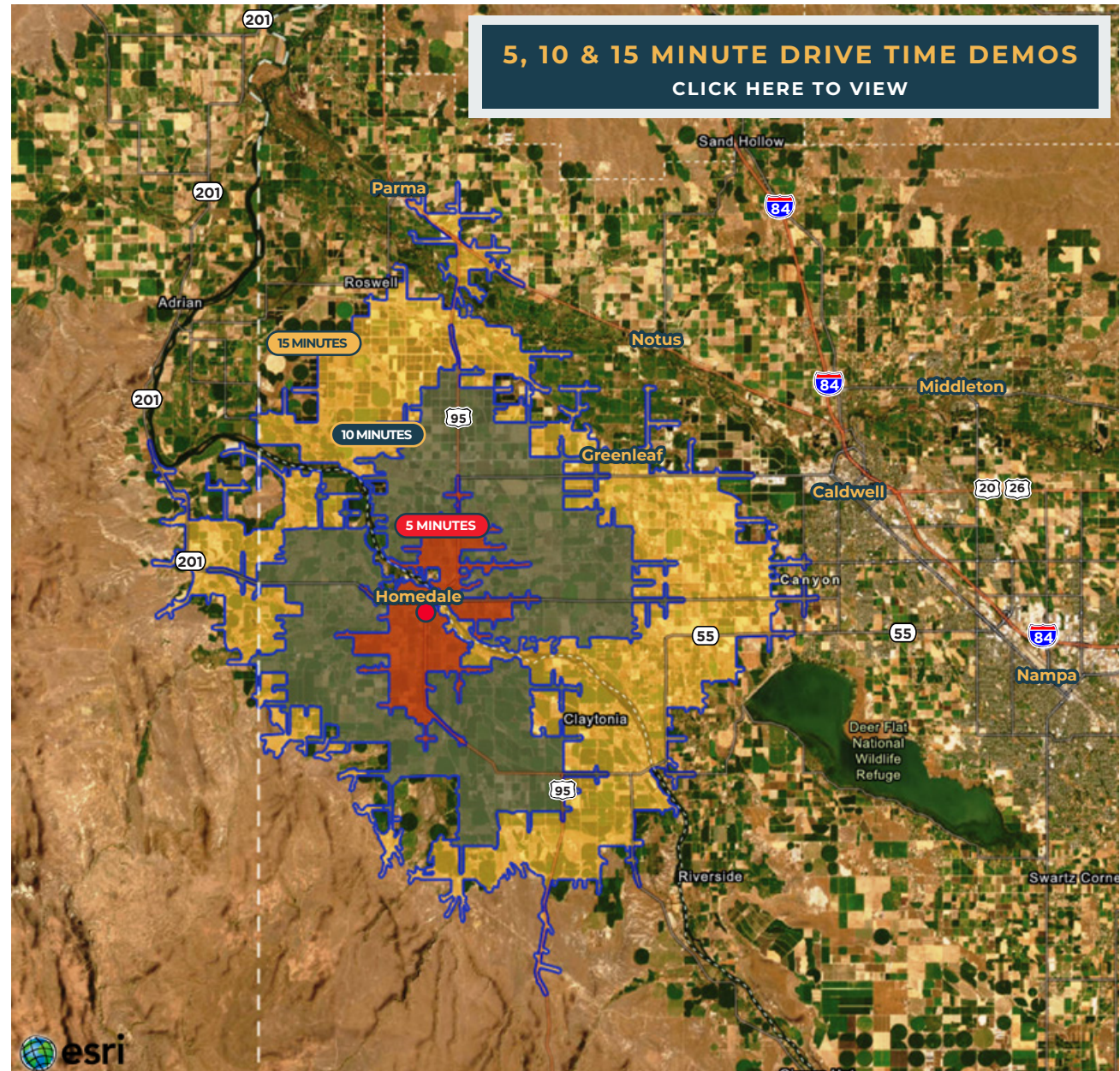
17,971
POPULATION

6,254
HOUSEHOLDS

\$71,161
MEDIAN HH INCOME

\$88,438
AVERAGE HH INCOME

39
MEDIAN AGE



Source: U.S. Census Bureau. Esri forecasts for 2025 and 2030. Esri converted Census 2010 into 2020 geography and Census 2020 data.

HOMEDALE IDAHO
REGIONAL INFORMATION



WELCOME TO
HOMEDALE
Idaho

Photo Credit: Kim Ashliman

ABOUT HOMEDALE

Homedale is surrounded by the rolling hills of the Owyhee Mountains. Groomed with small farms of a variety of crops Homedale is nestled in bountiful orchards, seasonal fruit stands and of course, Idaho's treasured vineyards. This serene location is only a few minutes away from surrounding cities of the Treasure Valley and only 37 miles away from the state capitol of Boise. Homedale's ideal location provides a refuge from the hustle and bustle of city life without compromising metropolitan access.

CITY & AREA RECREATION

Homedale boasts an active, thriving community with many amenities you might not expect to find in a small town!

SERVING YOUR NEEDS

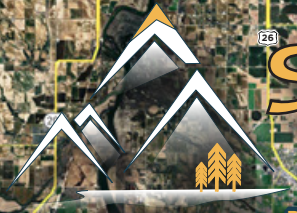
Homedale is a promising smart growth city. With regional and national chains taking their place among a variety of specialty stores, shops, restaurants and bars, Homedale is the perfect option for businesses small and large. The City of Homedale is proud to offer a full Chamber of Commerce to local businesses. Our Chamber is eager to preserve and support current businesses as well as promote expansion and growth.

HOMEDALE CHAMBER OF COMMERCE

Our mission is to promote and effect positive change in our community's economic environment & quality of life.

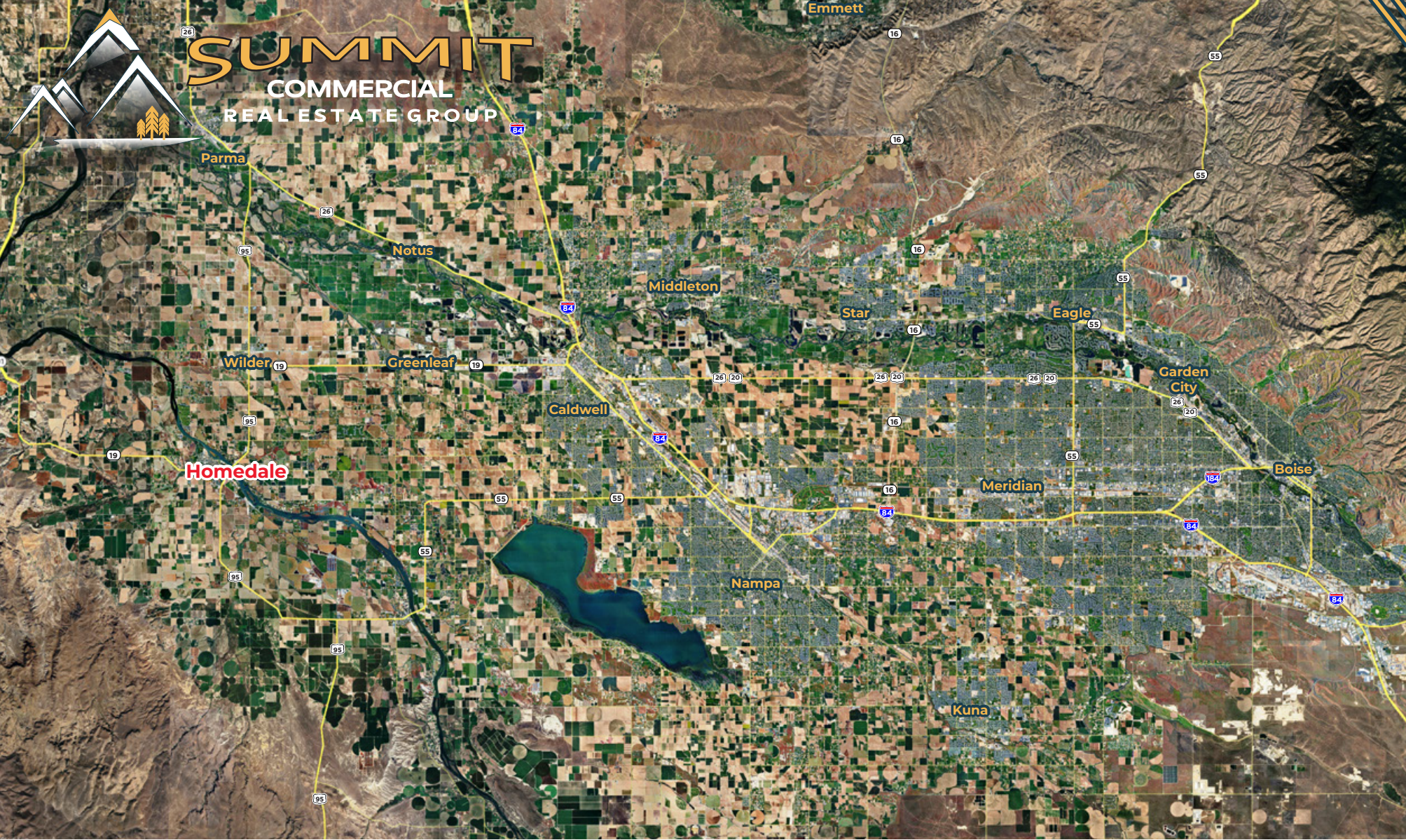
The Homedale Chamber serves the current community in numerous ways and is poised to be a key contributor to Homedale's future. For businesses, this means access to networking, business development & keeping abreast of community & business issues. For families & individuals, this means great community events & visitor & new resident information.

[CLICK HERE TO CONTACT](#)



SUMMIT

COMMERCIAL
REAL ESTATE GROUP



CONTACT

ANDREA NILSON

Executive Director
+1 208 890 4028
andrea@summitcreg.com

LEANN HUME, CCIM, CLS, CRRP

Executive Director
+1 208 890 1089
leann@summitcreg.com

JULIE KISSLER

Associate Director
+1 208 794 2746
julie@summitcreg.com

1517 WEST HAYS STREET

Boise, Idaho 83702
+1 208 975 4447
summitcreg.com

©2026 Summit Commercial Real Estate Group All rights reserved. The material in this presentation has been prepared solely for information purposes, and is strictly confidential. Any disclosure, use, copying or circulation of this presentation (or the information contained within it) is strictly prohibited, unless you have obtained Summit Commercial Real Estate Group's prior written consent. The views expressed in this presentation are the views of the author and do not necessarily reflect the views of Summit Commercial Real Estate Group. Neither this presentation nor any part of it shall form the basis of, or be relied upon in connection with any offer, or act as an inducement to enter into any contract or commitment whatsoever. NO REPRESENTATION OR WARRANTY IS GIVEN, EXPRESS OR IMPLIED, AS TO THE ACCURACY OF THE INFORMATION CONTAINED WITHIN THIS PRESENTATION, AND SUMMIT COMMERCIAL REAL ESTATE GROUP IS UNDER NO OBLIGATION TO SUBSEQUENTLY CORRECT IT IN THE EVENT OF ERRORS.